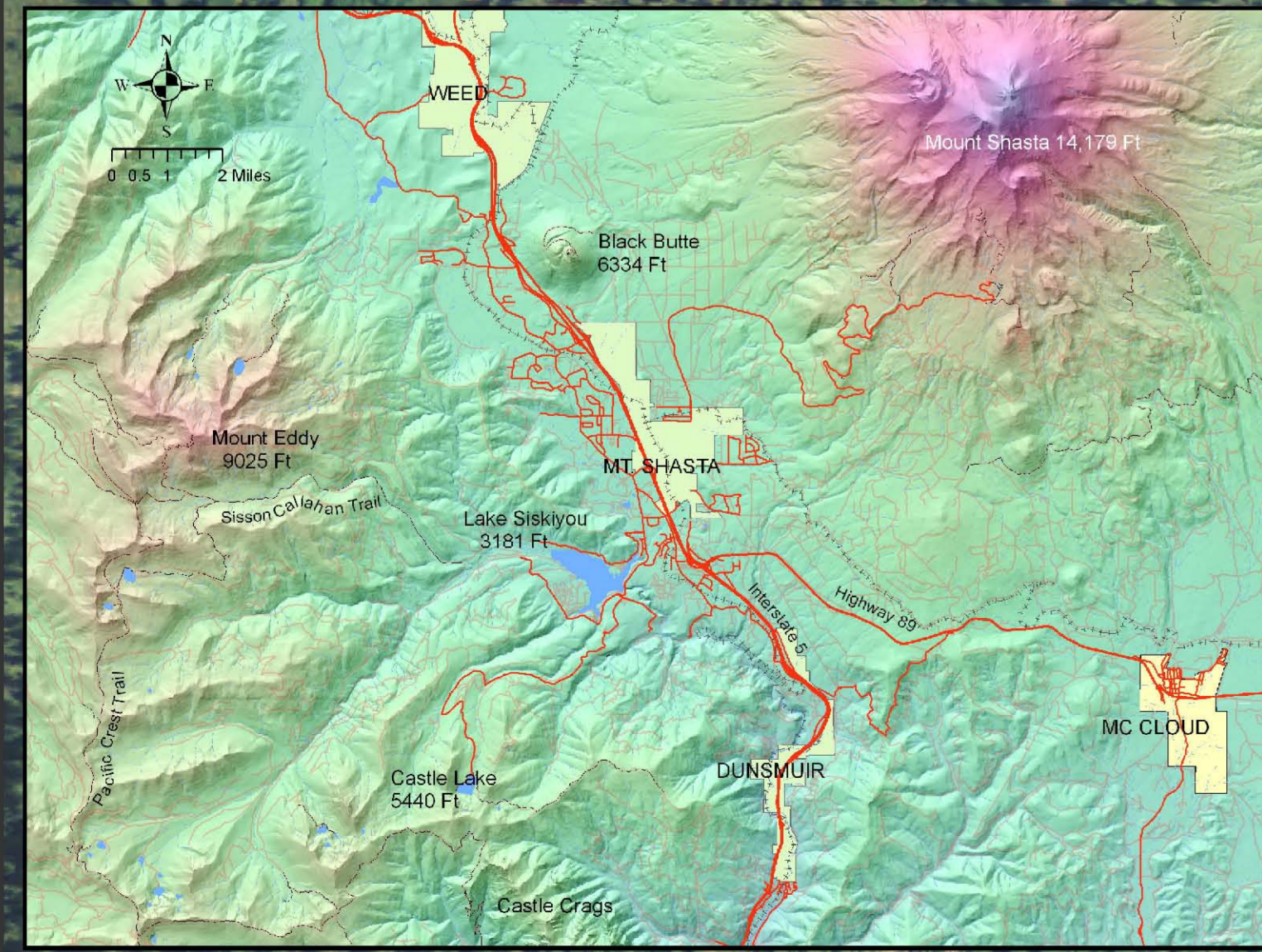


LAKE SISKIYOU TRAIL



Seasonal: Area open May - October, weather dependent



- Notice:**
1. SHARE USE TRAIL (BICYCLES - PEDESTRIANS USE CAUTION)
 2. DOGS MUST REMAIN ON-LEASH
 3. NO OFF ROAD VEHICLES
 4. NO SMOKING ON TRAIL
 5. NO CAMPFIRES (EXCEPT AT LAKE SISKIYOU CAMPGROUND)

Legend

	COUNTY ROAD		PARKING
	CAMPGROUND ROADS		RESTROOM
	MAIN TRAIL		BOAT RAMP
	ALTERNATE TRAILS		CAMPING AREA
	TRAIL GRADE EXCEEDS 6%		MILE MARKERS
	RIVERS		HANDICAP ACCESS