

# Gateway Phase II Trails

## Proposed Phase II Trails

- Beginner
- Intermediate
- Advanced

## Gateway Phase I Trails

- Gateway Trailheads
- Campground

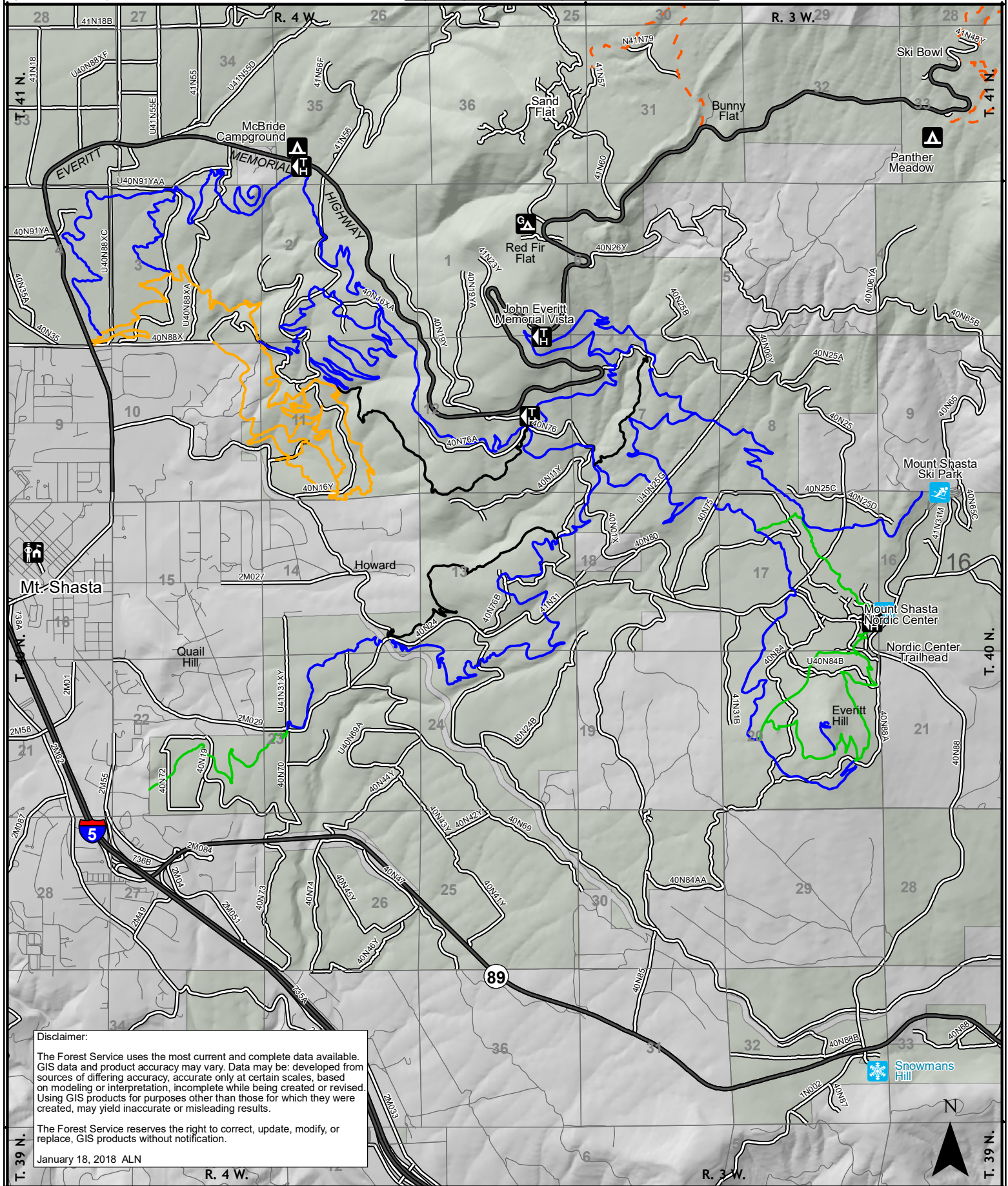
- Group Campground
- Downhill Skiing
- Nordic Center

- Ranger Station
- Snowpark
- FS MVUM Roads

- Other Roads
- FS MVUM Trails
- National Forest Lands
- Other Ownership

Contour Interval is 40 ft.

0 0.25 0.5 1 1.5 2 Miles



### Disclaimer:

The Forest Service uses the most current and complete data available. GIS data and product accuracy may vary. Data may be: developed from sources of differing accuracy, accurate only at certain scales, based on modeling or interpretation, incomplete while being created or revised. Using GIS products for purposes other than those for which they were created, may yield inaccurate or misleading results.

The Forest Service reserves the right to correct, update, modify, or replace, GIS products without notification.

January 18, 2018 ALN